

technical data type **BUBA+**

+ bracket

Body : standard; injected white polycarbonate.

Diffuser : standard; injected opal PMMA or opal polycarbonate.

Impact strenght data of the diffusor :

- Diffuser in PC : > 6Nm (IK08).
- Diffuser in PMMA : > 0.7Nm (IK05).

Reflector : glossy galvanised metal plate.

Bracket : injected polycarbonate.

Buba+ has a pre-mounting installation bracket for quick & easy electrical connection.

This bracket fits both large & small Buba+.

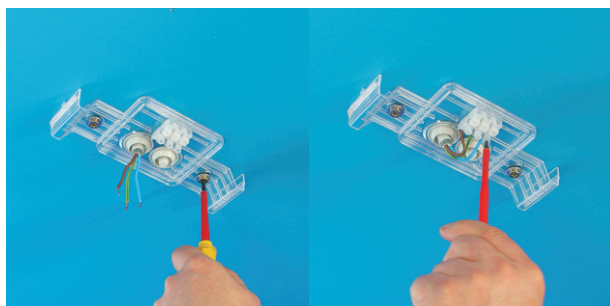
Electrical specifications :

- HF-ballasts
- **Optional** : - Emergency module.
(1x28W TC-DD, 1x18W TC-L).
- Motion detector.(Buba large only).
(1x22W T5R, 1x18W TC-L).



Lamps:

- 1x TC-DD 16W / 28W / 38W
- 1 or 2x TCSeI 7W / 9W
- 2x TCSeI 11W.
- 1 or 2 xTC-L 18W.
- 1x T5R 22W.



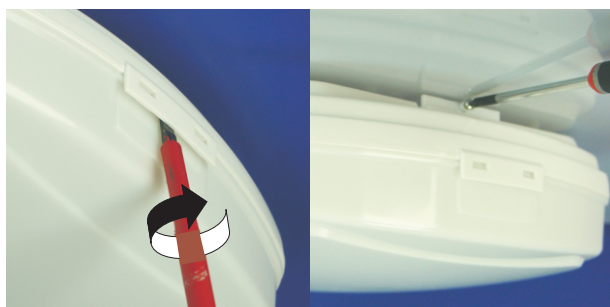
1. Bracket is fixed

2. wires attached to connector.



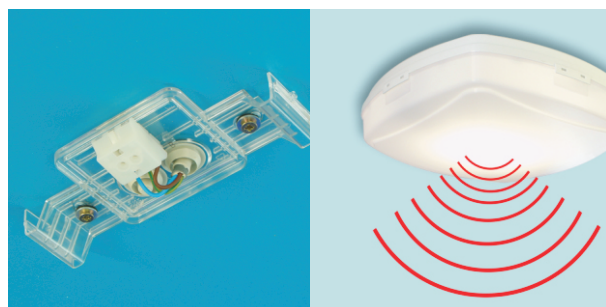
3. Buba+ is clicked on the bracket.

Two "clicks" for bracket mounting.



Easy opening of the diffuser

vandal-proof screw (Optional)

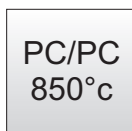


3 poles connector protection cap (Optional)

High frequency motion detector. (Optional)

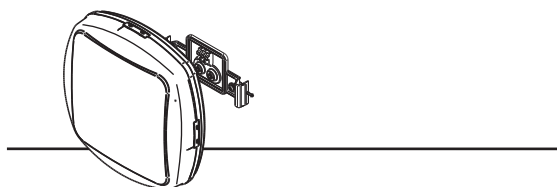


V09.12.2013



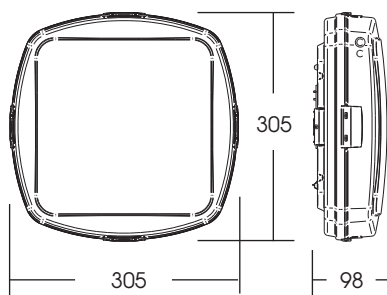
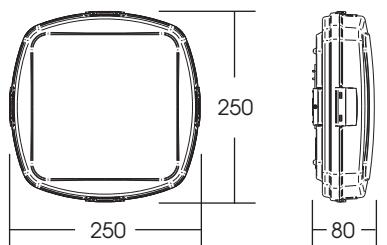
The liabilities are bound to the published informations, which might be modified without notice.





technical data type **BUBA+**

+ bracket



Buba+ Small (with bracket)		L	Ballast EL	
1x 7/9 W	TC-Sel	250	2G7	
1x16 W	TC-DD	250	GR10q	
1x18 W	TC-Del	250	G24q-2	
2x 7/9 W**	TC-Sel	250	2G7	

Buba+ Large (with bracket)		L	Ballast EL	
1x18 W	TC-L	305	2G11	
1x22 W	TR5	305	2GX13	
1x28 W	TC-DD	305	GR10q	
1x38 W**	TC-DD	305	GR10q	
2x11 W	TC-Sel	305	2G7	
2x18 W	TC-L	305	2G11	

Buba+ Large Emergency		L	Ballast EL.	Batt.
1x28 W**	TC-DD	305	GR10q	3h.
1x18 W**	TC-L	305	2G11	3h.

Buba+ Large Motion detector		L	Ballast EL.	
1x22 W	TR5	305	GR10q	
1x18 W	TC-L	305	2G11	

All dimensions are in mm.

** : Ta max. is 25°C.