



technical data type LILI LED

LILI, the LI near LIghting:

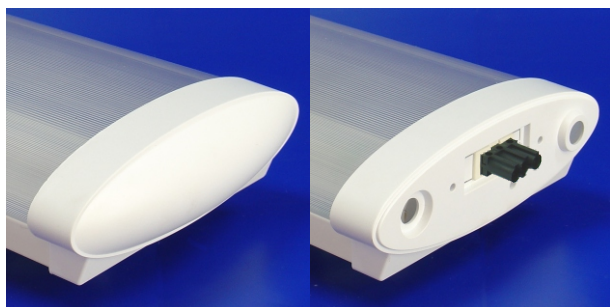
- The fitting consists of a white metal back plate, a plastic extruded frosted diffuser and standard white plastic injected endcaps.
- The cover guarantees an efficient direct/indirect light.
- The plastic diffuser is snap-in mounted on the metal backplate and is easy removable without any tool.
Material : PMMA (frosted)
- **Optional** :- Adjustable cable suspension (up to 2 m).
 - Convex endcap
 - In-line version Midcap (not for small !)
 - Version for LED tubes is also possible.



Electrical specifications:

- Individual or "in-line" luminaires (max 16A).
- 3000, 4000 K with CRI of min. 80
- 80.000h L80 B50 at Ta.max
- MacAdam 3 SDCM

- **Optional** :- DALI driver
- MOTION DETECTOR
- EMERGENCY Module



Option: Convex Endcap
(PS high impact)

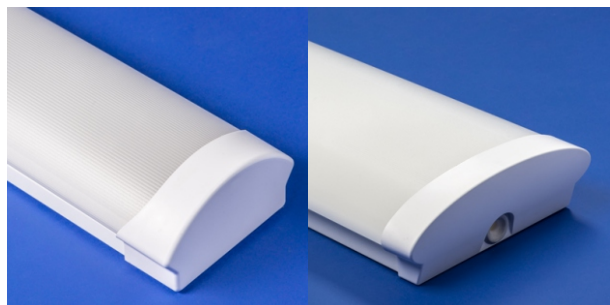
"Midcap" for in-line
assembly (only for WIDE)

SMALL:

Length	Power*	Flux**	Ta.max
630	11 W	1300 lm	35°C
630	20 W	2500 lm	27°C
1200	18 W	2600 lm	35°C
1200	36 W	5100 lm	27°C
1500	47 W	6900 lm	35°C
1500	58 W	8200 lm	27°C

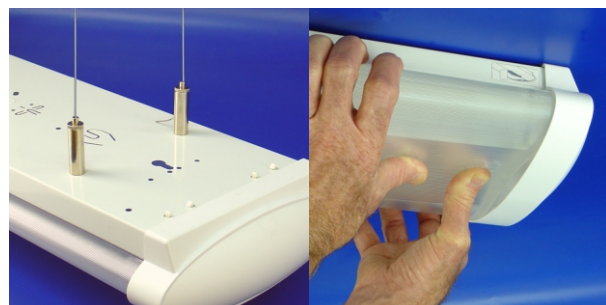
WIDE:

Length	Power*	Flux**	Ta.max
1200	22 W	3100 lm	35°C
1200	34 W	4600 lm	27°C
1500	29 W	4120 lm	35°C
1500	45 W	6090 lm	27°C



SMALL

WIDE

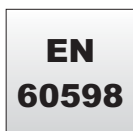


Adjustable cable
suspension (option)

Easy access
(no tools necessary)



03.09.2020



* Total power consumption of LED's and driver.

** Luminous flux of fitting @ 25°C for 840
(correction factor 0.95 for 830)

Luminous output and electrical load
have an initial tolerance of
+/- 10 % from nominal.

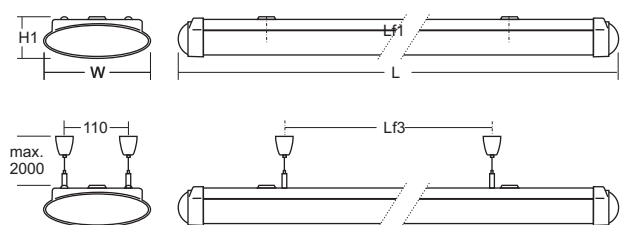


technical data type LILI LED

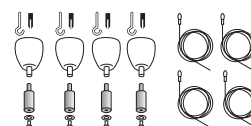
LiLi LED SMALL	L	W	H1	Lf1	Lf3	Kg
630	630	110	60	498	-	1,5
1200	1210	110	60	800	710	3,6
1500	1500	110	60	1000	910	4,0

LiLi LED WIDE

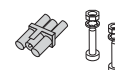
1200	1293	208	77	800	710	4,0
1500	1550	208	77	1000	910	4,4



LiLi Suspension set



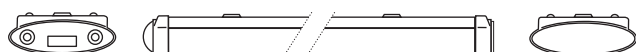
LiLi Connection set



LiLi



LiLi Mid-End



LiLi Mid-Mid

