

technical data type PAC

Base : Glass reinforced polyester, compression moulded (GRP)

- **Optional :** Stainless steel suspension bracket.
- **Optional :** Double cable entry (same side).
- **Optional :** PWG60 : quick installation grommet. IP65

Diffuser : clear blow molded diffuser, available in PMMA or PC.

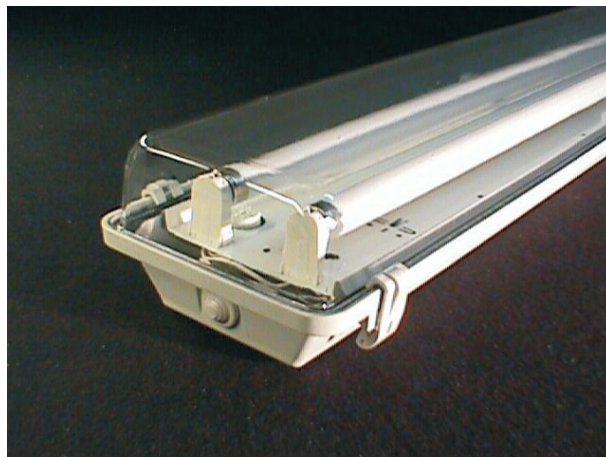
Impact strength data of the diffuser :

- diffuser in PMMA : ≥ 0.22 Nm
- diffuser in PC : ≥ 6 Nm

Reflector : white metal gear tray

- **Optional :** Bright anodised aluminium mirrors : narrow, medium, wide, extra wide.

Clips : 3-part polycarbonate clips or 2-part stainless steel clips.

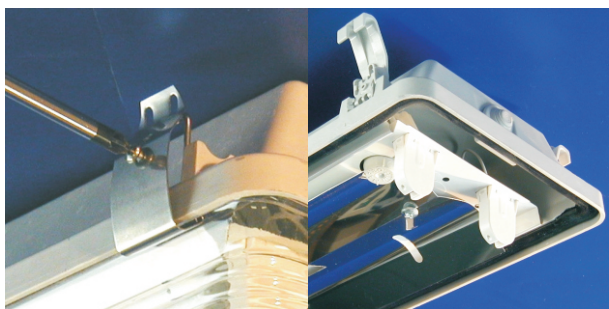


Electrical specifications :

- ferromagnetic ballast and switch or electr. starters
- **optional:** - parallel compensation
- HF or HFD ballast
- throughwiring in polyester housing:
1 or 3 fase (3 x 2.5 mm²) (5 x 2.5 mm²)
- emergency modules

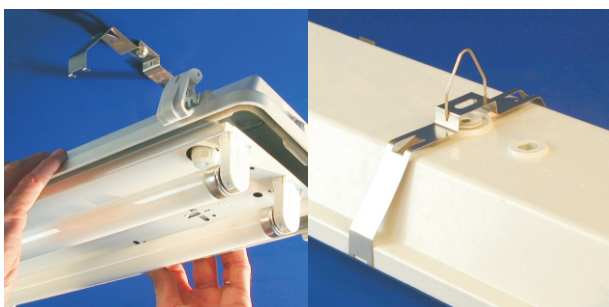
Lamps :

- T8 lamps only in 36w and 58w
- diameter 38 application possible (T12)
- T5 in 28w - 54w and
35w - 49w - 80w available



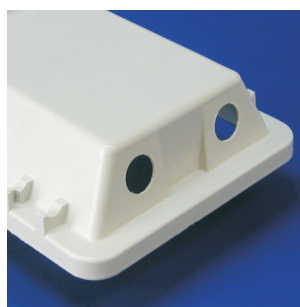
Stainless steel clip,
or vandal proof clip
(optional)

Alum. reflectors
(optional)



Stainless steel
suspension bracket
(optional)

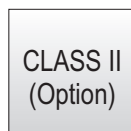
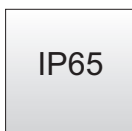
Stainless steel
suspension bracket
(optional)



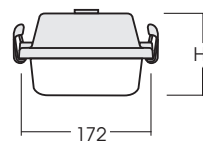
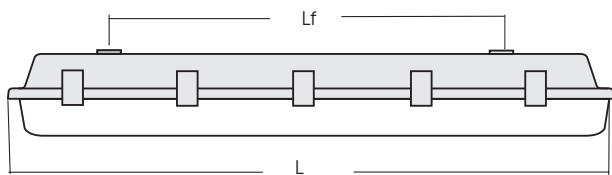
Double cable-entry
(optional)



1-lamp version



technical data type PAC



Model T8	Clips	H	L	Lf
1x 36W	8	104	1312	800
2x 36W	8	104	1312	800
1x 58W	10	108	1612	1100
2x 58W	10	108	1612	1100
Model T5				
1x 28W	8	104	1312	800
1x 54W	8	104	1312	800
2x 28W	8	104	1312	800
2x 54W (**)	8	104	1312	800
1x 35W	10	108	1612	1100
1x 49W	10	108	1612	1100
1x 80W	10	108	1612	1100
2x 35W	10	108	1612	1100
2x 49W	10	108	1612	1100

*Dimensions without clips

** Limited ambient temperature