

technical data type **WKX**

Base : Batten fitting made of white stove enamelled steel.

- optional :

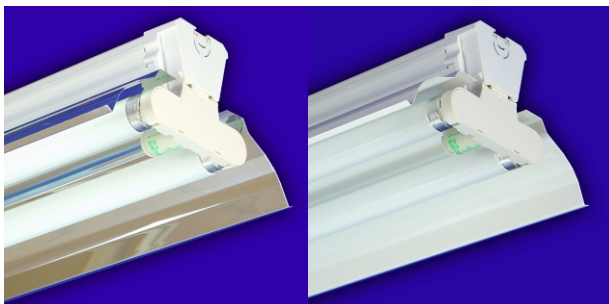
- white steel reflectors.
- high polished aluminium reflector.
- high polished alum. assymetrical reflector.

Suitable for a wide range of applications where many low cost lighting points are requested.



Electrical specifications :

- The metal case contains all switchstart (other versions on request) control gear components, lampholders and terminal connector for fluorescent lamps.
- Electrical wiring with first quality components according to European norms and standards.

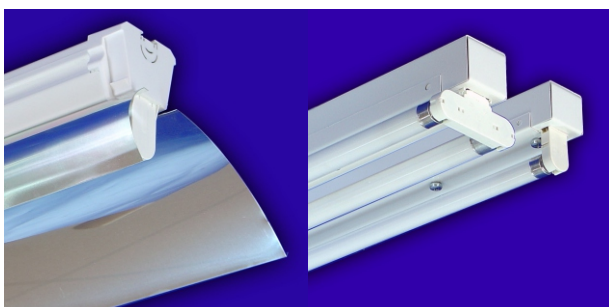


WKX T8 with aluminium reflector (optional)

WKX T8 with white coated reflector (optional)

Lamps :

- fluorescent T8 lamps in 18w - 36w - 58w
- fluorescent T5 lamps in 14w-24w-28w-35w-49w-54w-80w



WKX T8 with aluminium assymetrical reflector (optional)

WKX T5



3p. troughwiring with connector (optional)

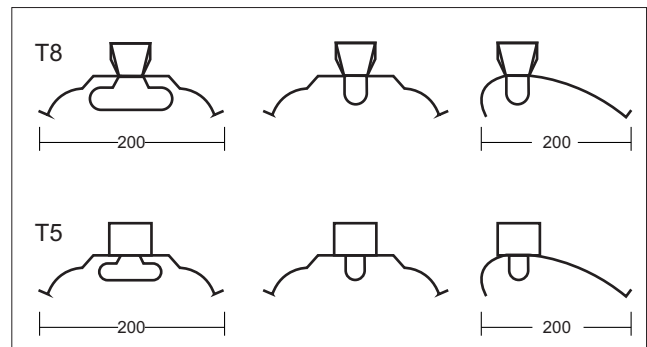
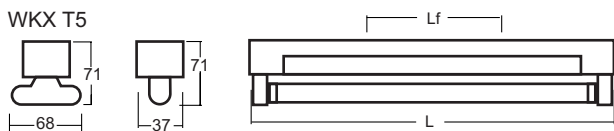
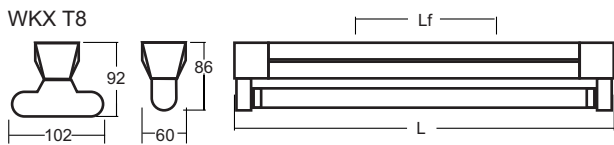


V09.12.2013

*The dimensions shown on this page can be modified without notice.



technical data type WKX



Model T8		L	Lf
1x18W	2x18W	615	450
1x36W	2x36W	1225	900
1x58W	2x58W	1525	1200

Model T5		L	Lf
1x14/24W	2x14/24W	584	400
1x28/54W	2x28/54W	1184	900
1x35/49/80W	2x35/49/80W	1484	1200

